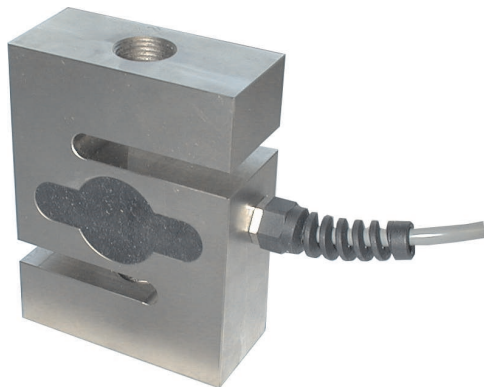


SG-AST Series

Tension and Compression S-Type



Specifications

Nominal Capacity	100kg to 1t
Nominal Output at capacity	2mV/V \pm 0.1%
Linearity error	<0.025% FSO
Non-Repeatability	<0.020% FSO
Zero return/creep (30 mins)	<0.035%/0.050% FSO
Temp effect span/10°C	<0.015% FSO
Temp effect zero/10°C	<0.02% capacity
Insulation resistance	>1000M Ω
Compensated temperature range	-10° to 40°C
Output resistance	352 Ω nominal
Input resistance	410 Ω nominal
Service load	100% of capacity
Safe load	125% of capacity
Mechanical failure	300% of capacity
Recommended excitation	5V to 12V AC/DC
Maximum Excitation	15VDC
Environmental protection	IP67 standard

All specifications are a maximum, as a % (\pm) of full load, unless otherwise stated

Capacities 100kg to 1t

Aluminium construction

Tension and compression universal loading

Can be used for multi-point weighing or scale conversion

Temperature compensation, both zero and span

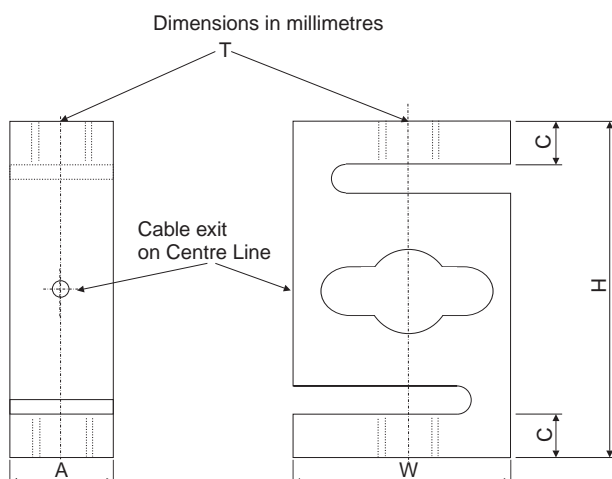
Moisture protected

Compatible with international standard fittings

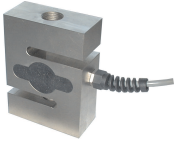
Compact, lightweight and easy to handle

Ideal for agricultural use

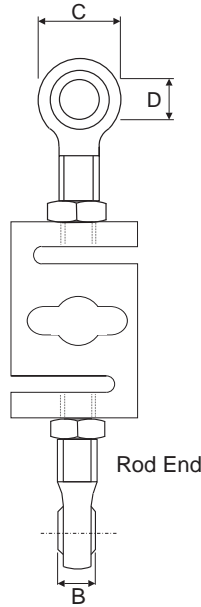
Capacity	Order Code
100kg	SG-AST-100
250kg	SG-AST-250
500kg	SG-AST-500
1t	SG-AST-1T



SG-AST	A	C	H	T	W
100kg	19	12.5	70	M8 x 1.25P	64
250kg	19	12.5	70	M8 x 1.25P	64
500kg	25	17.5	85	M12 x 1.75P	70
1T	25	20.0	96	M12 x 1.75P	75



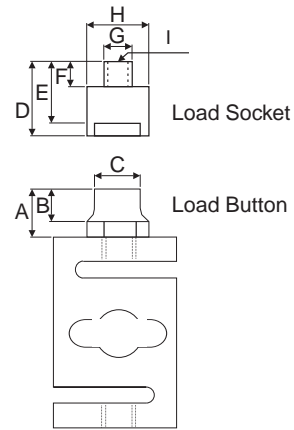
SG-AST Series Accessories and Wiring Specifications



Rod End

SG-AST	100kg - 250kg	500kg - 1T
B	12	16
C	22.25	30
D	8	12
Thread	M8 x 1.25	M12 x 1.75
Centre of bearing to end of thread is 54 mm		

Rod ends are used with the AST load cell for tension applications. They are used singularly or in pairs and provide ease of installation with self aligning action.



Load Socket

Load Button

SG-AST	100kg - 250kg	500kg - 1T
A	12	12
B	7	5
C	14	14
D	20	21
E	17	18
F	7	8
G	10	10
H	20	20

A load button and hardened socket is used with the AST in compression applications. With the load cell rigidly fixed at the base, load is applied through the socket. If a load button is attached top and bottom the load cell converts to self centring pendle acion

SG-AST	100kg - 250kg	500kg - 1T
Rod end bearing	SG-A-REM8N	SG-A-REM12N
Load button	SG-A-LBM8	SG-A-LMB12
Load socket	SG-A-LS20	SG-A-LS20
Ball and Cup	SG-A-LS20	SG-A-BC20

WIRING SPECIFICATIONS

RED	+ Excitation
BLACK	- Excitation
GREEN	+ Signal
WHITE	- Signal

CABLE SPECIFICATIONS

Cable is 4 core with screen
Length: 3 metres

LOPT_AST-3.1-0

AMALGAMATED INSTRUMENT CO PTY LTD

ACN: 001 589 439

Unit 5, 28 Leighton Place Hornsby
NSW 2077 AUSTRALIA

Telephone: +61 2 9476 2244
Facsimile: +61 2 9476 2902

e-mail: sales@aicpl.com.au
Internet: www.aicpl.com.au