

SG-ASB Series

Low cost shearbeam load cell



Specifications

Nominal Capacity	0-125kg to 0-1t
Nominal Output at capacity	2mV/V \pm 0.1%
Factory calibration mode	compression
Linearity error	<0.025% FSO
Non-Repeatability	<0.01% FSO
Zero return/creep (30 mins)	<0.035%/0.025% FSO
Temp effect span/10°C	<0.015% FSO
Temp effect zero/10°C	<0.020% capacity
Insulation resistance - bridge to ground	>1000M Ω
Insulation resistance - cable to ground	>1000M Ω
Compensated temperature range	-10° to 40°C
Output resistance	352 Ω nominal
Input resistance	410 Ω nominal
Service load	100% of capacity
Safe load	125% of capacity
Mechanical failure	300% of capacity
Recommended excitation	5V to 15V AC/DC
Maximum Excitation	15VDC
Environmental protection	IP67

All specifications are a maximum, as a % (\pm) of full load, unless otherwise stated

Capacities: 0-125kg to 0-1t

Anodised Aluminium

Corrosion resistant

Fully encapsulated

Full range of mounting accessories

Suitable for single or multi-point weighting

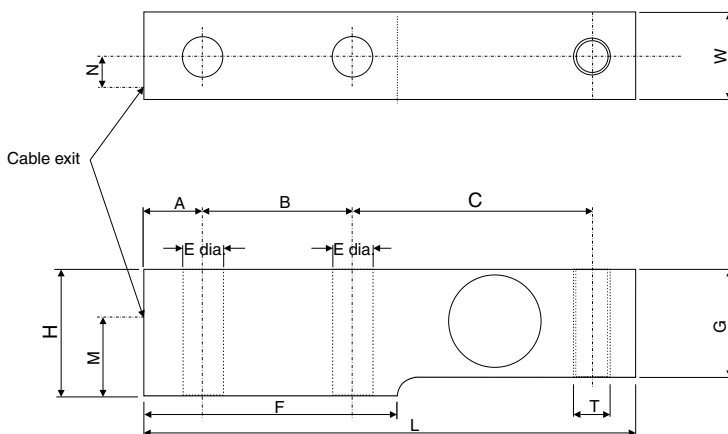
Ideal for agricultural use

Capacity	Order Code
0-125kg	SG-ASB-125
0-250kg	SG-ASB-250
0-500kg	SG-ASB-500
0-1t	SG-ASB-1T

WIRING SPECIFICATIONS

RED + Excitation
 BLACK - Excitation
 GREEN + Signal
 WHITE - Signal

Cable length: 3 metres



SG-ASB	A	B	C	E	F	G	H	L	M	N	T	W
0-125kg	10	30	52	6.5 dia	55	20	25	100	12.5	5.2	M8 x 1.25	22
0-250kg	13	35	72	10.3 dia	70	23	25	130	13.5	7.5	M12 x 1.75	25
0-500kg	13	35	72	10.3 dia	70	28	30	130	16	7.5	M12 x 1.75	25
0-1T	13	35	72	10.3 dia	70	30	31.5	130	16	7.5	M12 x 1.75	25