

LE5-LR Crane/Hoist logging displays - load cell input

Display type examples



5 digit 45mm digits red LED



4 digit 57mm digits red LED



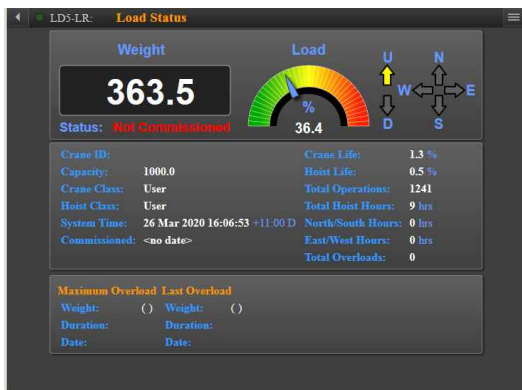
4 digit high contrast 58mm digits green LED



4 digit 100mm digits red LED



4 digit 200mm digits green LED

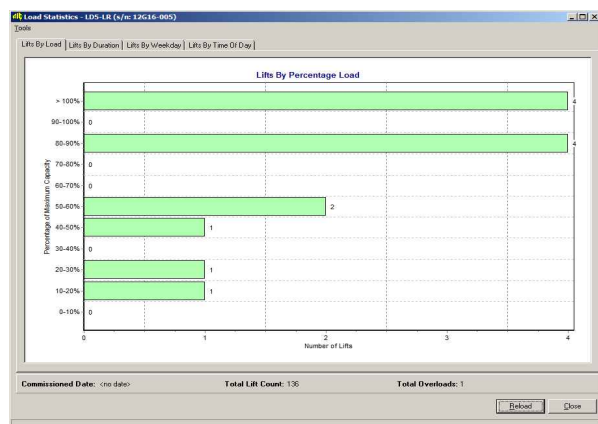


Example from web page



Main features

- DWP calculations based on AS 2550.1-2011
- Logged records include DWP, overloads, overload duration, maximum load, average load, lifts, lift duration average weight, maximum weight, minimum weight per lift etc.
- Offers load display and logging in one instrument.
- Windows software included for monitoring, configuration and downloading logs etc.
- Ethernet comms. and data logger memory standard
- 20 to 200mm digit height display sizes
- Single 4 or 6 wire mV/V wire input
- Digital inputs for Run/Direction or Lift/Return
- Digital inputs for Up, Down, North, South, West and East travel
- Optional RS232, RS485 and USB comms.
- IP65 rated wall mount enclosure
- Powder coated steel or stainless steel cases available for 100 and 200mm displays
- 4 relays fitted as standard rated at 240VAC, 5A into a resistive load. Relay 1 is dedicated for DWP operation
- 3 configurable remote inputs as standard
- Remote inputs can be configured to one of a wide range of functions including zero, peak hold, etc.
- The auto-brightness feature for LED displays varies the display brightness to suit the ambient light
- Standard brightness and high contrast display versions
- See "Order Codes" sections for full listing of available models



Example from Windows Software

LE5LR-1.0-0

Windows and Web Page examples



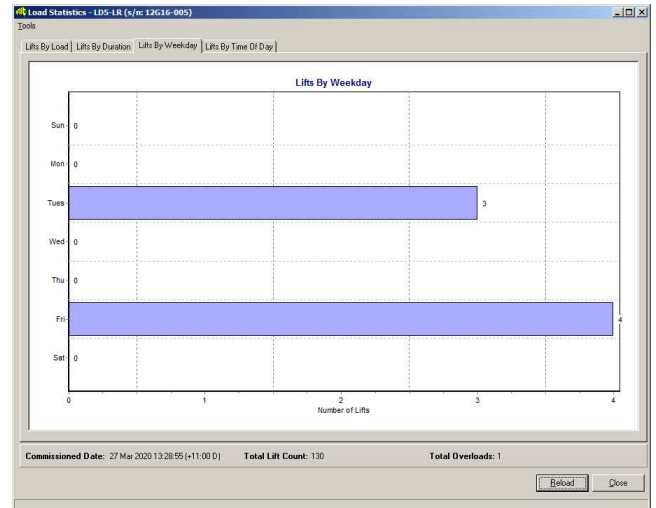
Web Page Example - Main Menu



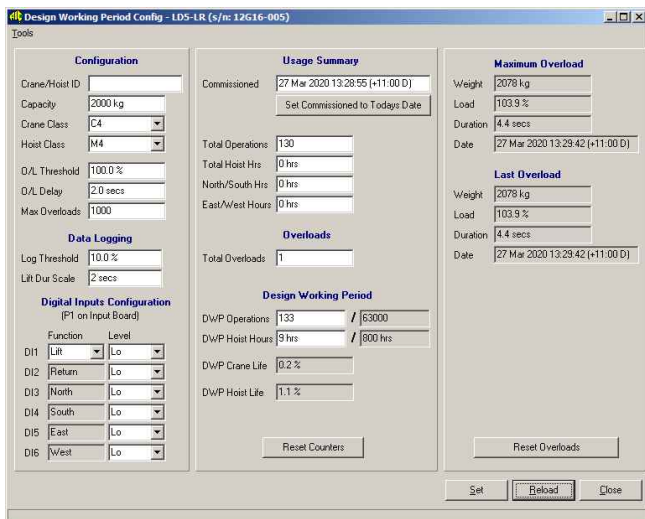
Web Page Example - Download Logs



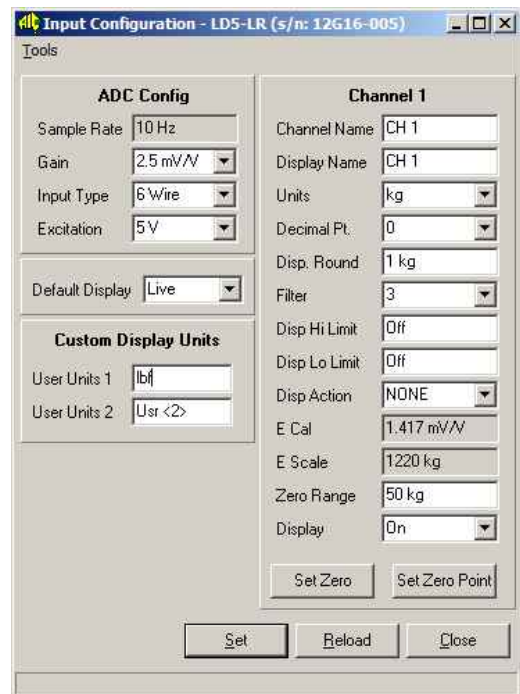
Load Display Window from Windows software



Lifts by Weekday from Windows software



DWP Window from Windows software



Input Configuration from Windows software

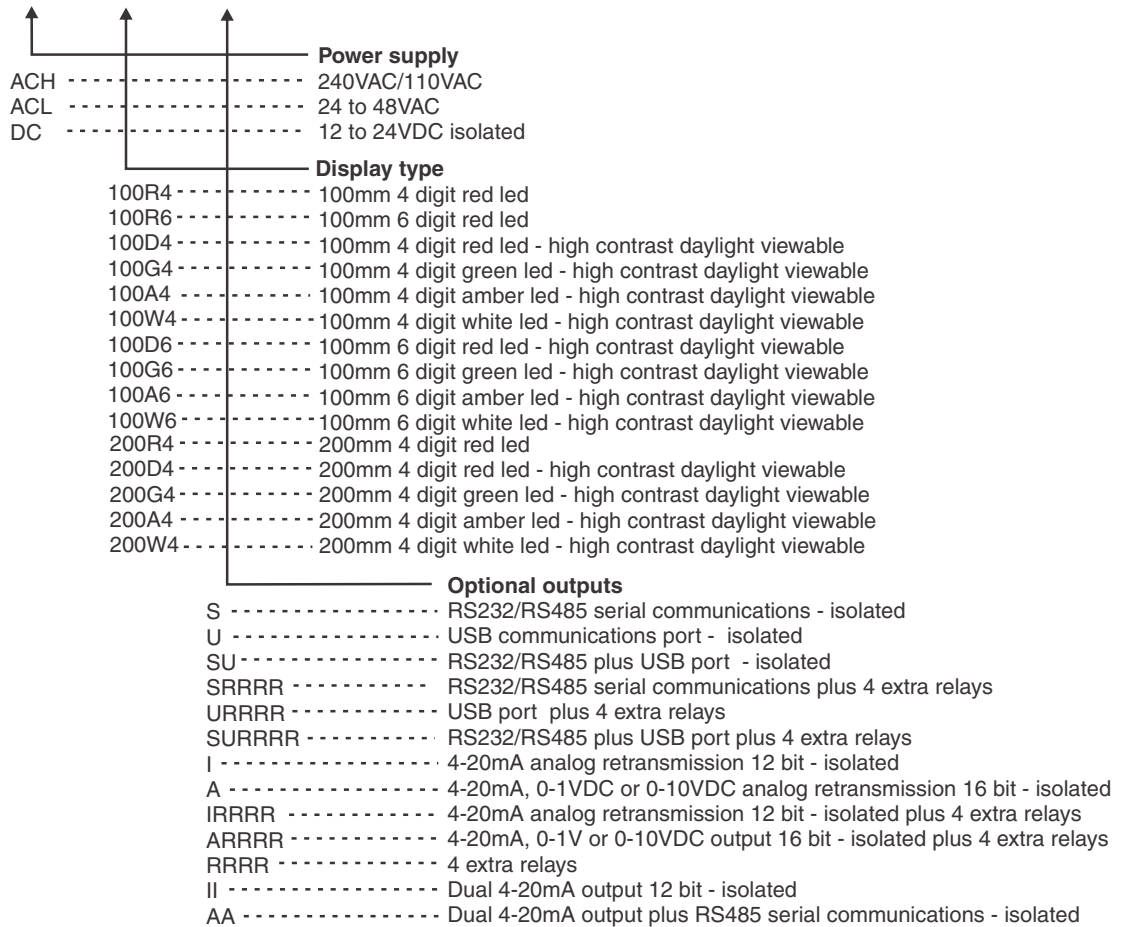
LE5LR-1.0-0

Order codes for 100mm and 200mm displays

The last sections is for optional items (if required).

Optional outputs are factory configured.

LE5 - LR - [] - [] - []

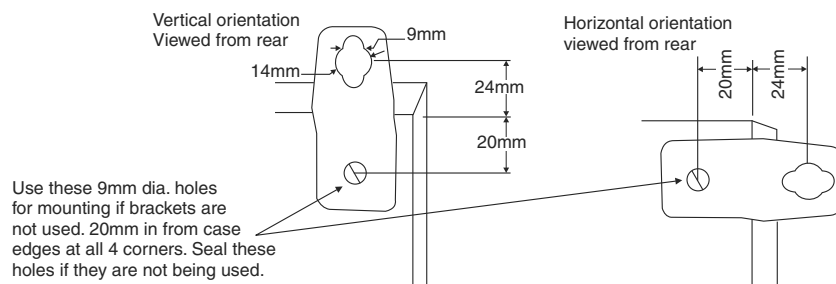


Mounting brackets and panel mounting kit

20 to 58mm models are supplied with 4 mounting tabs for surface mounting with mounting centres 180mm (w) x 155mm (h). An optional panel mounting kit (part no. LD-MTG-PM-KIT) is available for 20 to 58mm models with panel cut out being 240mm (w) x 130mm (h) +0mm/-0.5mm.

100mm and 200mm models are shipped with 4 metal brackets and mounting hardware.

The diagrams below illustrate vertical and horizontal installation of these 100mm and 200mm model brackets. If mounting without the brackets, then the 9mm diameter case holes provided for the brackets can be used as alternative mounting holes. If the brackets are not used in mounting, then these holes should be sealed against dust and water.



LE5LR-1.0-0